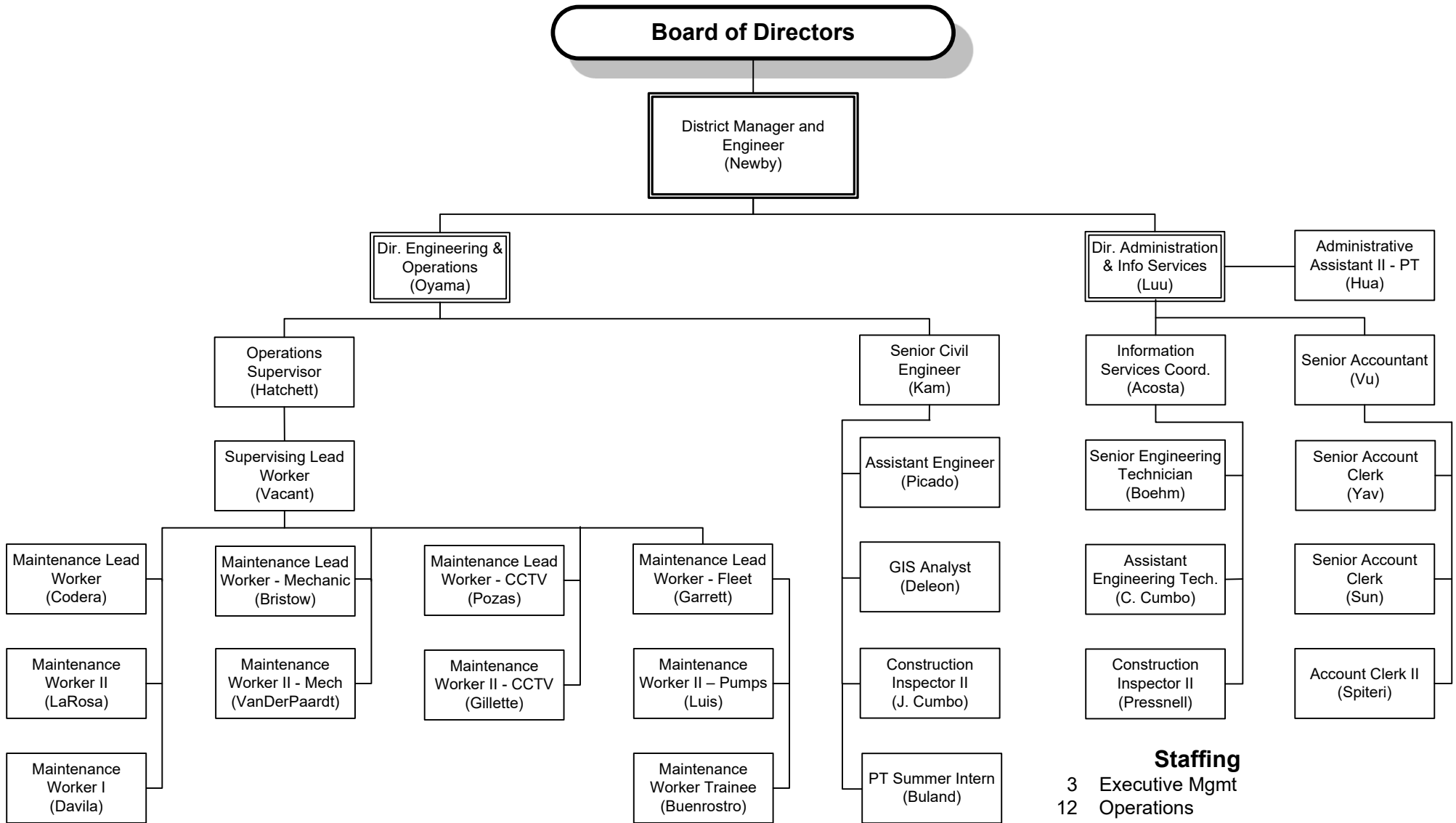


FY 2018-2019 ORGANIZATION CHART



Staffing
 3 Executive Mgmt
 12 Operations
 5 Engineering
 9 Administration
27 Total FT / 2 PT Positions

Operations

Engineering

Administration

MW Specialties include Fleet Mechanic, CCTV Operator, Pump Mechanic, and General Mechanic